



Australian Government

National Health and Medical Research Council

National Centre for Social and Economic Modelling – gender analysis of NHMRC Project Grants scheme

In 2017, NHMRC commissioned the National Centre for Social and Economic Modelling (NATSEM) to analyse NHMRC application and funding data by gender from 2001 to 2015.

Further information on NHMRC strategies to address gender inequality can be found on the [Women in Health Science](#) webpage.

NATSEM findings on application numbers and funded rates for the NHMRC Project Grants scheme are as follows:

- 1a. Gender Differences in Project Grants for Chief Investigator As (CIAs), 2001-2015
- 1b. Differences in Funded Rates in Projects Grants for Chief Investigator As (CIAs) by Gender, 2001-2015
- 2a. Gender Differences in Project Grants, for all Chief Investigators (CIA-CIJ), 2001-2015
- 2b. Differences in Funded Rates for Projects Grants by Gender for all Chief Investigators (CIA-CIJ), 2001-2015
- 3a. Gender Differences in Project Grants for Other Chief Investigators (CIB-CIJ), 2001-2015
- 3b. Differences in Funded Rates for Projects Grants by Gender for Other Chief Investigators (CIB-CIJ), 2001-2015

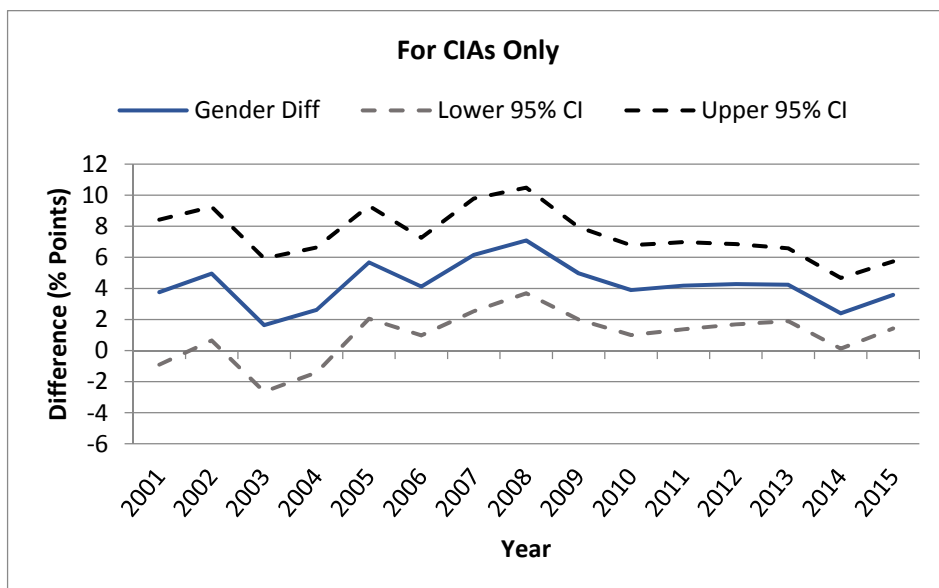
Project Grants

Significance level * p=0.05, ** p=0.01, *** p<0.001. Source: NATSEM calculations from NHMRC grant data.
CI = Confidence interval. CIA = Chief Investigator A.

1a. Gender Differences in Project Grants for Chief Investigator As (CIAs), 2001-2015

For CIAs Only						
Year	Female No of apps	Male No of apps	Gender Ratio of apps	Female Funded Rate (%)	Male Funded Rate (%)	Diff (% pts)
2001	414	1,110	2.68	21.0	24.8	3.8
2002	468	1,224	2.62	19.2	24.2	5.0*
2003	506	1,249	2.47	21.7	23.4	1.6
2004	571	1,287	2.25	20.3	22.9	2.6
2005	655	1,413	2.16	17.3	22.9	5.7**
2006	963	1,816	1.89	18.9	23.0	4.1**
2007	852	1,572	1.85	23.4	29.5	6.2***
2008	925	1,720	1.86	21.5	28.6	7.1***
2009	1,104	1,991	1.80	18.8	23.8	5.0***
2010	1,227	2,116	1.72	20.2	24.1	3.9**
2011	1,305	2,202	1.69	19.9	24.0	4.2**
2012	1,416	2,305	1.63	17.2	21.4	4.3**
2013	1,442	2,471	1.71	13.9	18.2	4.2***
2014	1,421	2,382	1.68	13.1	15.5	2.4*
2015	1,412	2,436	1.73	11.1	14.7	3.6**
Mean	979	1,820	1.98	18.5	22.7	4.2

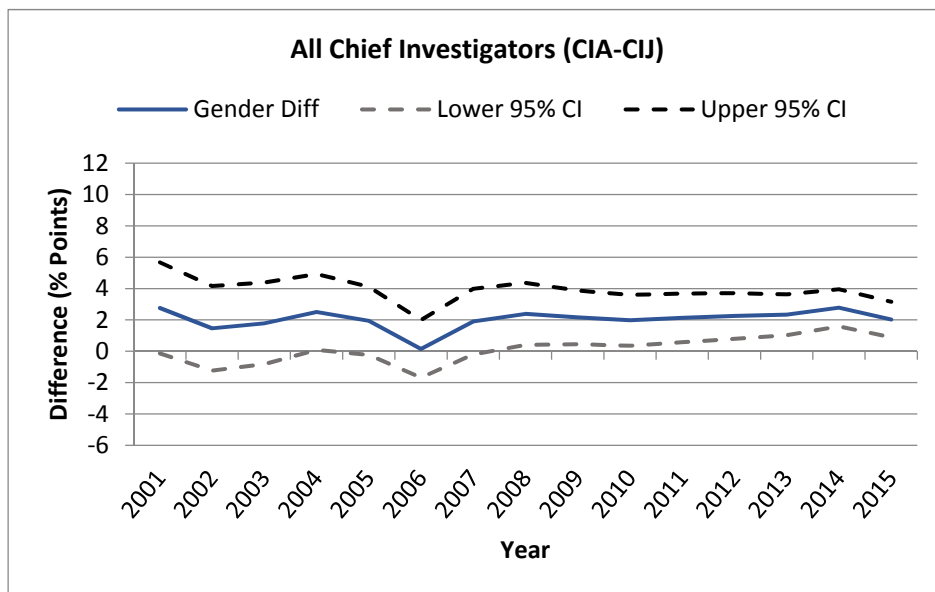
1b. Differences in Funded Rates in Projects Grants for Chief Investigator As (CIAs) by Gender, 2001-2015



2a. Gender Differences in Project Grants, for all Chief Investigators (CIA-CIJ), 2001-2015

All Chief Investigators (CIA-CIJ)						
Year	Female No of apps	Male No of apps	Gender Ratio of apps	Female Funded Rate (%)	Male Funded Rate (%)	Diff (% pts)
2001	1,083	2,752	2.54	21.1	23.9	2.8
2002	1,237	3,145	2.54	20.9	22.3	1.5
2003	1,320	3,274	2.48	20.5	22.2	1.8
2004	1,601	3,582	2.24	20.9	23.4	2.5*
2005	1,866	4,064	2.18	19.0	20.9	1.9
2006	2,732	5,653	2.07	20.2	20.4	0.2
2007	2,512	4,967	1.98	24.9	26.8	1.9
2008	2,770	5,373	1.94	24.0	26.4	2.4*
2009	3,343	6,432	1.92	20.6	22.7	2.2*
2010	3,840	6,828	1.78	20.8	22.7	1.97*
2011	4,226	7,466	1.77	21.1	23.2	2.1**
2012	4,456	7,637	1.71	18.5	20.8	2.3**
2013	4,827	8,300	1.72	15.4	17.8	2.3***
2014	5,139	8,762	1.71	12.6	15.4	2.8***
2015	5,371	9,339	1.74	12.4	14.4	2.0***
Mean	3,088	5,838	2.02	19.5	21.5	2.0

2b. Differences in Funded Rates for Projects Grants by Gender for all Chief Investigators (CIA-CIJ), 2001-2015



3a. Gender Differences in Project Grants for Other Chief Investigators (CIB-CIJ), 2001-2015

For Other Chief Investigators (CIB-CIJ)						
Year	Female No of apps	Male No of apps	Gender Ratio of apps	Female Funded Rate (%)	Male Funded Rate (%)	Diff (% pts)
2001	669	1,642	2.45	21.2	23.3	2.1
2002	769	1,921	2.50	21.9	21.1	-0.7
2003	814	2,025	2.49	19.7	21.5	1.9
2004	1,030	2,295	2.23	21.2	23.6	2.5
2005	1,211	2,651	2.19	19.9	19.8	-0.1
2006	1,769	3,837	2.17	21.0	19.2	-1.8
2007	1,660	3,395	2.05	25.7	25.6	-0.2
2008	1,845	3,653	1.98	25.2	25.3	0.1
2009	2,239	4,441	1.98	21.4	22.2	0.8
2010	2,613	4,712	1.80	21.0	22.1	1.1
2011	2,921	5,264	1.80	21.6	22.8	1.2
2012	3,040	5,332	1.75	19.1	20.5	1.3
2013	3,385	5,829	1.72	16.1	17.6	1.5
2014	3,718	6,380	1.72	12.4	15.3	2.9***
2015	3,959	6,903	1.74	12.9	14.3	1.5*
Mean	2,109	4,019	2.04	20.0	21.0	1.0

3b. Differences in Funded Rates for Projects Grants by Gender for Other Chief Investigators (CIB-CIJ), 2001-2015

